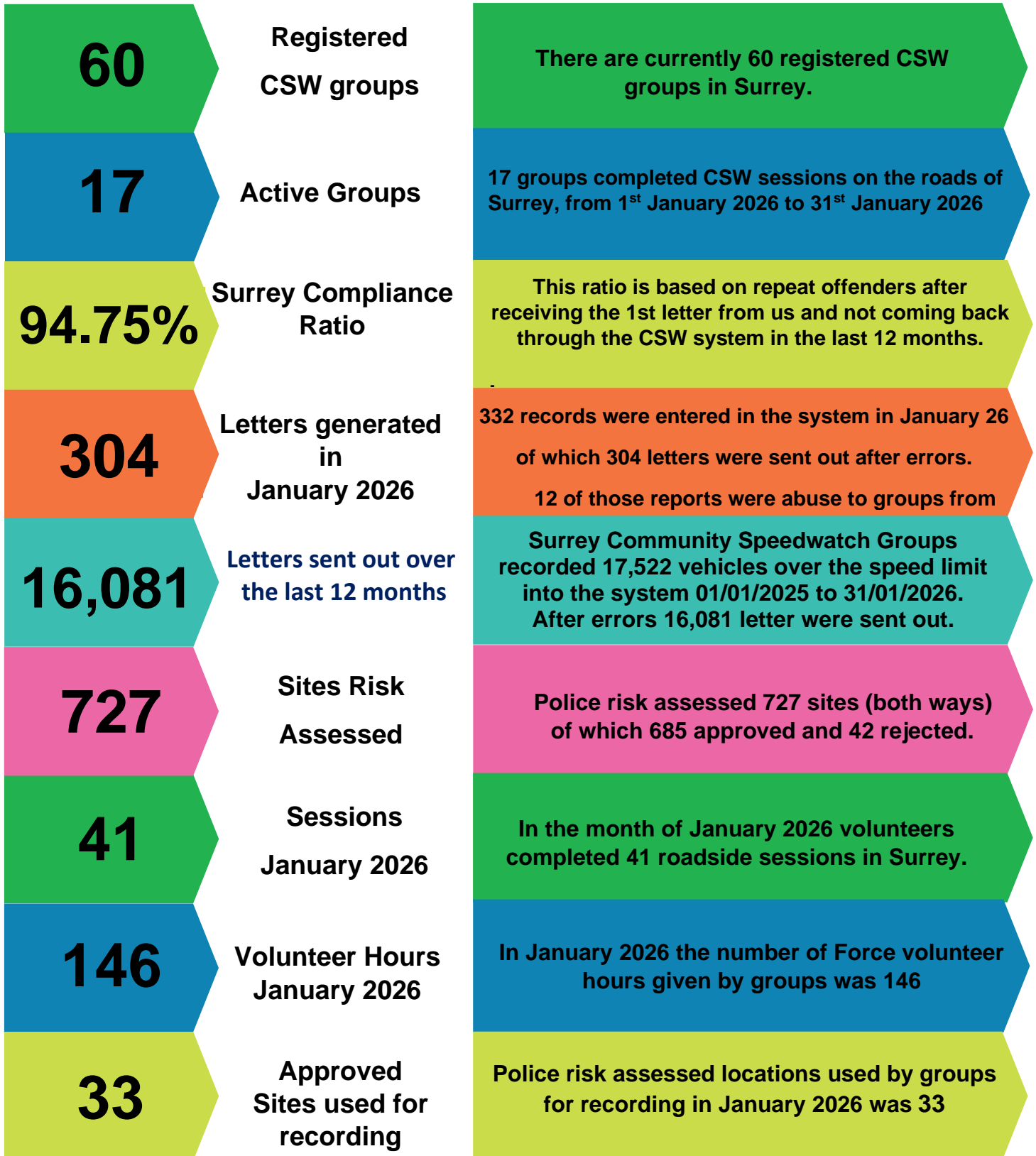




Surrey
RoadSafe

Community Speed Watch Surrey Yearly Update – Force Overview 1st January 2026 to 31st January 2026



DATA USED:

Dates used 01/01/2026 – 31/01/2026- Monthly Figures. Author Brenda Gough



Surrey
RoadSafe

Community Speed Watch Surrey Yearly Update – Force Overview 1st January 2026 to 31st January 2026



Any additional message or info. 1st January 2026 to 31st January 2025

Out of the 60 teams registered – **17 teams were active in January 2026**

0 New Roads Risk assessments were conducted in January 2026

13 New roads request are waiting to be risk assessed.

8 Possible new teams' instructions sent out since 1st January 2026 to 31st January 2026

0 New team were trained in January 2026

0 Team ceased in January 2026- Equipment for 2 groups still to be picked up.

164 –Roads that teams have requested to be Risk Assessed that **have never been monitored.**

HIGH VIS JACKETS

It has been brought to our attention that a few people are not wearing their Hi Vis Jackets when out on sessions.

As you are aware Hi Vis jackets **must be worn at all times.**

Reflective jackets should be used from a health and safety perspective and continued noncompliance will jeopardise membership of the team.

Do you have volunteers in your account that have been there for over a year but not participated in any of your team session. If yes, please contact them and ask if they wish to continue.

If they do not wish to continue, **please remove them from your account and let me know so that I can update my force volunteer's spreadsheet.**

DISPLAYING CSW ROAD SIGNS

Rules that apply are- **If you have bends or a kink in road, if on a brow of a hill or is a health and safety risk then road signs must be displayed. If you are not sure, please send me an email with the name of your roads/sites and we will arrange for them to re-risk assessed and confirmed.** If we do not hear from you then we will assume that if you have stopped using roads signs this is because they do not fall into the category given above, which is fine. Going forward, any new site request, we will inform you if your new site needs Road signs, once risk assessed.

Did you know- You can get your own individual monthly/yearly reports for your own area by going into “Campaigns” then “Reports” then change date for the period you want.